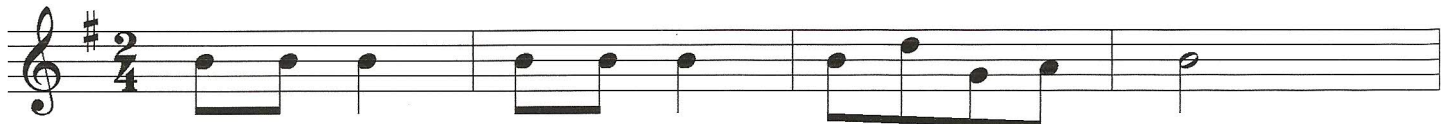
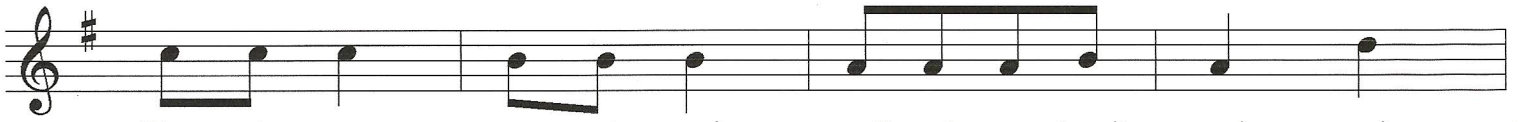


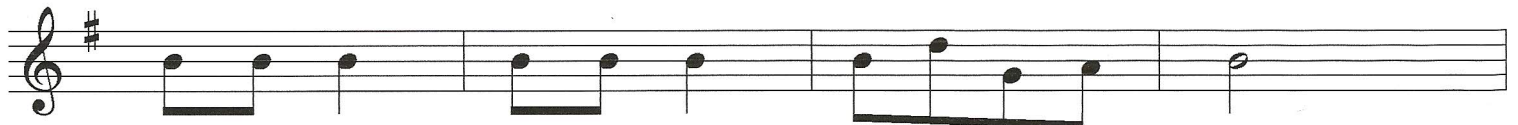
5. DIN DAN DON



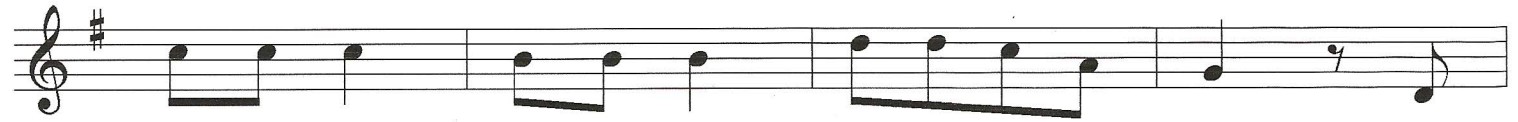
Din dan don, *SIM* din dan don! E - gu - be - rri - on!



Zo - ri - on, *DOM* zo - ri - on! *S* Ga - bo - nak, din - dan, dor *REM*



Din dan don, *SIM* din dan don! E - gu - be - rri - on



Zo - ri - on, *DOM* zo - ri - on, *SIM* Ga - bo - nak ga - bon *REM* I - *SIM*



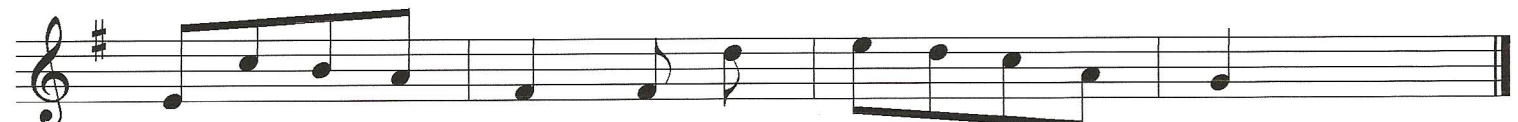
zar bat ha - si da diz - diz - ka ze - ru - an, *DOM*



rri o - na za - bal - tzen a - ri zai - gu mun - du - ar Ja - *REM* *SIM*



io da, ja - io da, Jau - na - ren se - me - a, *DOM* as .



ka - txo ba - tean da - go, las - to - en gai - ne - an. *REM* *SIM*